




آبرسان طلوع
بهاررود
Abresan Tolou Baharrod

FITTINGS AND VALVES



Ductile cast iron pressure fittings and valves

Complete range for almost every
application field



With a great thanks to God that helps us to take steps in our country's industry and be participant in it's prosperity.

Abresani Tolou Co. began it's activity with a factory equipped by traditional furnaces under Reihani brothers in Hamedan at 1994, in the field of water supply pipe fittings producing. Also in this field another factory was established in Tehran at 2002. Necessity of further area for manufacturing all kind of industrial valves and fittings to complete it's product basket, according to the institutional development plan; an extensive and equipped factory under the name of **Abresan Tolou Bahar rood** in Tehran's Abbas Abad Industrial City was built at 2013.

The new factory with induction furnace and equipped Laboratory, advanced industrial machinery and utilization of the technical experts and experienced personnel, with production capacity of more than 5500 Tons per year; is one of the best equipped industrial valves and fittings manufacturer. It should be noted that all products are designed and produced according to international and national standards.



آبرسان طلوع
بهاررود

Abresan Tolou Baharood

Manufacturer of industrial ductile and steel pipe fittings and valves



Pressure of Flow Control Valve
DN: 50-600 mm
PN: 10-16 bar



Pressure Reducing Valve
DN: 50-600 mm
PN: 10-16 bar



Globe Valve
DN: 50-600 mm
PN: 10-16 bar



Gate Valve
DN: 50-400 mm
PN: 10-25 bar



**Air Valve
Single Chamber
-Single Orifice**
DN: 50-200 mm
PN: 10-25 bar



**Air Valve
Single Chamber
-Double Orifice**
DN: 50-200 mm
PN: 10-25 bar



**Air Valve
Double Chamber
-Double Orifice**
DN: 50-200 mm
PN: 10-25 bar



**non-return
Lifting Check Valve**
DN: 50-300 mm
PN: 10-25 bar
Class F6



**non-return
Lifting Check Valve**
DN: 50-1000 mm
PN: 10-25 bar
Class F15



**non-return
Tilting Disk Check Valve**
DN: 100-600 mm
PN: 10-25 bar



**non-return
Swing Check Valve**
DN: 50-300 mm
PN: 10-25 bar



Butterfly Valve
DN: 100-1600 mm
PN: 10-25 bar



Fire Hydrants
DN: 80-100 mm
PN: 10-16 bar



Flap Valve
DN: 100-1400 mm
PN: 10-25 bar



Strainers Y Type
DN: 50-300 mm
PN: 10-25 bar



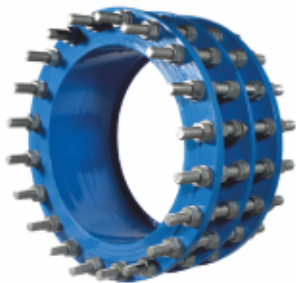
Strainers A Type
DN: 150-1200 mm
PN: 10-25 bar



Strainers B Type
DN: 150-1200 mm
PN: 10-25 bar



Strainers C Type
DN: 150-1400 mm
PN: 10-25 bar



Dismantling Joint F1
DN: 50-2000 mm
PN: 10-25 bar



Dismantling Joint F2
DN: 50-2000 mm
PN: 10-25 bar



Expansion Joint
DN: 150-1400 mm
PN: 10-25 bar



All Flanged Cross
DN: 100-700 mm
PN: 10-25 bar



All Flanged Tees
DN: 40-1200 mm
PN: 10-25 bar



All Socket Tees (Tyton)
DN: 40-300 mm



Double Socket Tees with flanged Branch (Tyton)
DN: 40-1200 mm
PN: 10-25 bar



Double Socket Tees with flanged Branch (Bolted Gland)
DN: 80-1000 mm
PN: 10-25 bar



Double Flanged Bends
DN: 40-1200 mm
PN: 10-25 bar
Angle: 11-90



Double Socket Bends (Tyton)
DN: 40-1200 mm
Angle: 11-90



Double Flanged Duck Foot Bend
DN: 50-1000 mm
PN: 10-25 bar



Double Socket Bends (Bolted Gland)
DN: 100-1000 mm
Angle: 11-90



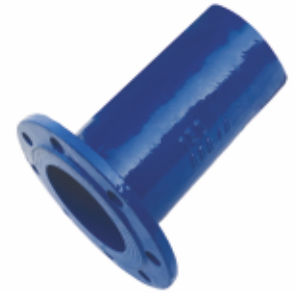
Double Flanged Taper
DN: 50-1200 mm
PN: 10-25 bar



Double Socket Taper (Tyton)
DN: 50-1200 mm



Double Socket Taper (Bolted Gland)
DN: 100-1000 mm



Flanged Spigot
DN: 60-2000 mm
PN: 10-25 bar



Collar (Bolted Gland)
DN: 40-1200 mm



Flanged Socket (Bolted Gland)
DN: 100-1000 mm
PN: 10-25 bar



Collar (Tyton)
DN: 40-1200 mm



Flanged Socket (Tyton)
DN: 40-1200 mm
PN: 10-25 bar



Blank Flanged
DN: 40-1200 mm
PN: 10-25 bar



Gland
DN: 100-1000 mm



T-Bolts



Gibault Joints



Service Clamp



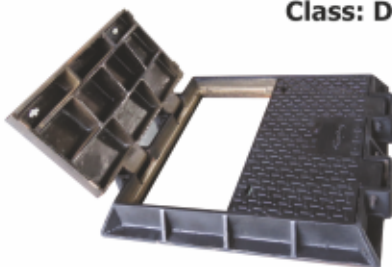
Manhole Trapdoors
Class: D400



Manhole Trapdoors
Class: C250



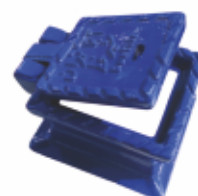
Cast Iron Step



Manhole Trapdoors
Class: E600



Inspection Trapdoors
Class: D400



Inspection Trapdoors
Class: A15, B125



Gully Trapdoors
Class: D400



آبرسان طلوع
بهاررود
Abresan Tolou Baharood

FITTINGS AND VALVES

DESIGNING & ENGINEERING

RESEARCH & DEVELOPMENT

QUALITY ASSURANCE

JOBGING FOUNDRY & MACHINING

آدرس کارخانه: تهران - جاده خاوران - بعد از پاسگاه شریف
آباد - شهرک صنعتی عباس آباد - ابتدای خلیج فارس
تلفن کارخانه: ۵ - ۳۴ ۴۲ ۶۶ ۳۶ - ۰۲۱
کارخانه همدان: همدان - کیلومتر ۱۰ کرمانشاه ۲-۸۱ ۳۴۵۸۶۴۸۱-۰۸۱
دفتر مرکزی: ۵ و ۳ - ۸۶۰۳۰۴۶۲ - ۰۲۱



INSO 3732
INSO 3363
INSO 4841



2017-2018
Catalog

Factory Address: Abbas Abad Industrial Zone
Khalij Fars St, Khavaran Road, Tehran, Iran
Tel: +98 21 36426634 - 5
Factory 2 : 10 km of Kermanshah Road,
Hamedan, Iran Tel: 081 34586481-2
Head Office: +98 21 86030462 - 3,5
www.atbr.ir info@atbr.ir
www.abresanitolou.com



BS EN ISO 9001:2008
BS EN ISO 10002:2014
BS EN ISO 14001:2004